



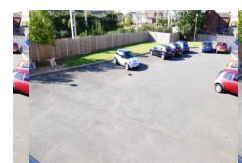
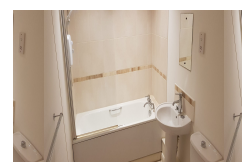
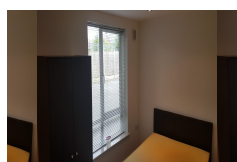
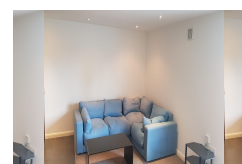
Letting Agents
&
Professional Property Landlords

Castle View Place, Stafford, ST162FB

Reserved - **£575 pcm**

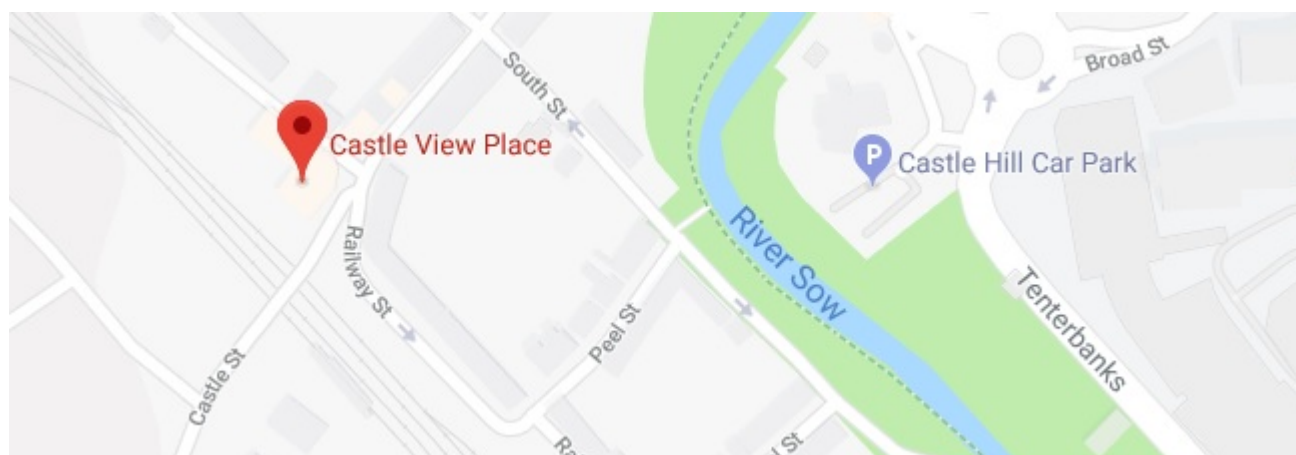
Property type: Apartment

- Secure parking
- Open plan
- Part furnished
- Local Amenities



Full Description

MD Properties are pleased to announce this one bedroom apartment. It is located a few minutes' walk from the town centre, railway station, Sainsbury's and the lovely Victoria park. The M6 is approx 5 minutes away by car. The apartments in this development have off road parking and video entrance. Situated on the first floor the entrance leads to hallway with storage area. A modern white bathroom suite has a shower. The open plan kitchen/lounge has washer/dryer built in cooker and fridge coupled with wall and base units. The lounge area is both light and airy. A double bedroom completes the accommodation. It's ideal for a single or professional couple. Viewing is recommended.



Telephone
(+44) 01785 224408

Fax
(+44) 01785 224408

E-mail
info@mdproperties.co.uk